

SE 1/4 OF NE 1/4 OF

3-2

TAXING UNIT: 10,66

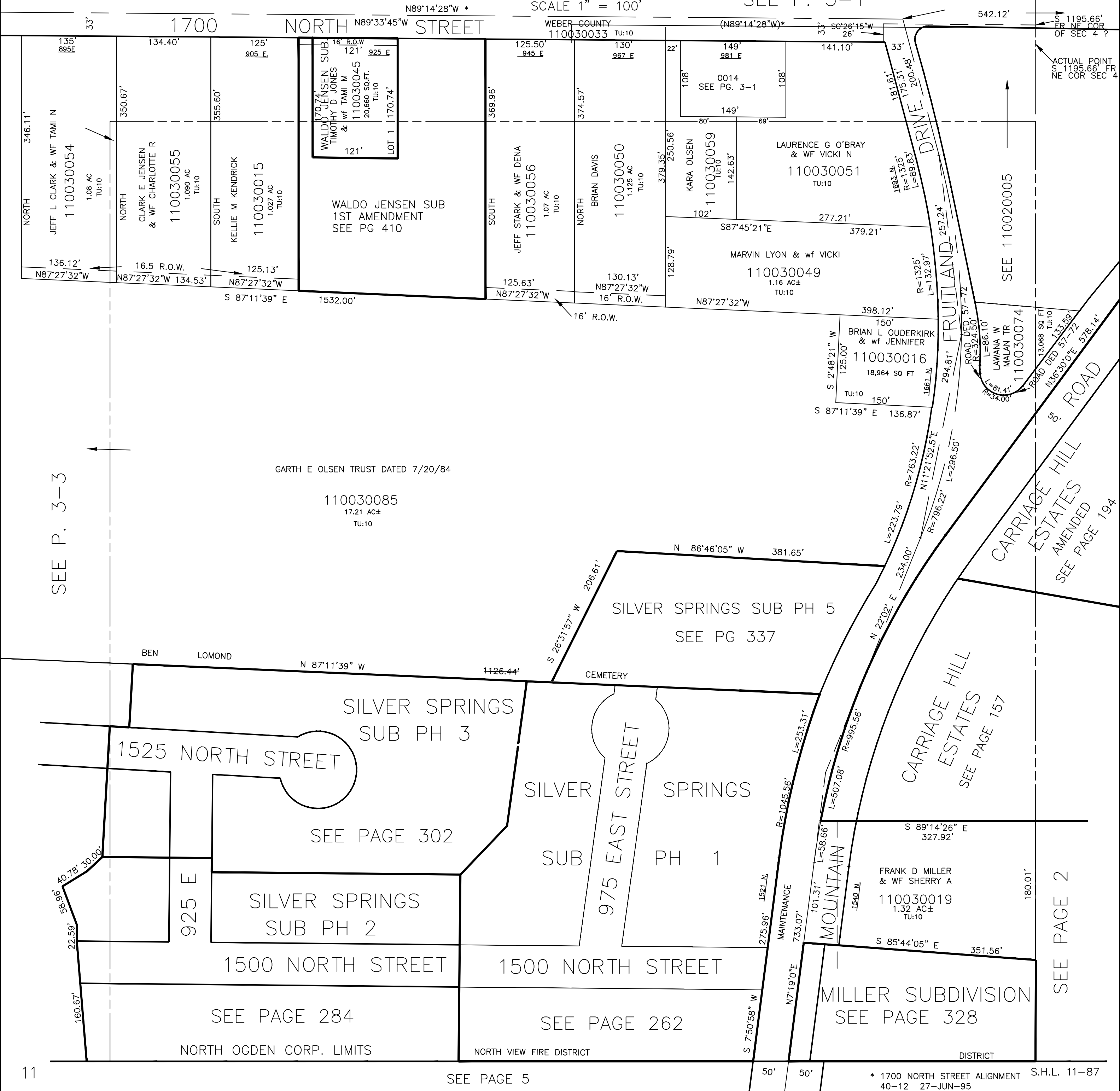
SECTION 4, T.6N., R.1W., S.L.B. & M.

ALSO SEE P. 3-3,4

IN NORTH OGDEN CITY

SEE P. 3-1

SCALE 1" = 100'



SEE P. 3-3

SEE 110020005

SEE PAGE 2

SEE PAGE 284

SEE PAGE 262

SEE PAGE 5

\* 1700 NORTH STREET ALIGNMENT S.H.L. 11-87 40-12 27-JUN-95